

GETTING STARTED

Using our Sieve

Using our sieve can be a good way to place Krycell Snow powder onto your work.

At 700 micron aperture it holds the powder until it is shaken. The width of 110mm

Is optimum for most models. We use a lightweight polyurethane and an encapsulated stainless steel mesh.

The advantages of these materials is that they are strong and durable, but also, the sieve can be used for many modelling materials without any danger of corrosion, or decay.

If the sieve is held too close to where the snow is being applied, it will produce a speckled effect' This looks like a lot of dots rather than snow. This looks worse when the snow is applied thinly.

To avoid this situation hold the sieve at least 35cm, or 350mm above your work when applying. This will allow the powder to disperse more evenly over your

Only fill the sieve half full of snow powder when applying the snow over the model. model.

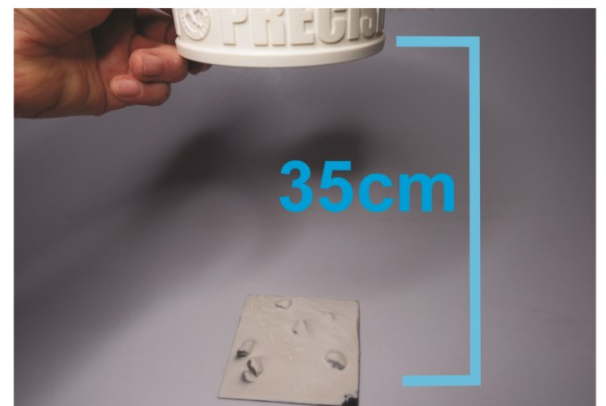
Our adhesive

Precision Ice and Snow adhesive is water clear and water fine. It is perfect for applying our Krycell snow powders. It is also suitable for the superfine bonding of scenic scatters and other scenic materials.

It can be applied by brush, airbrush and sprayed from various pump-spray bottles. It is water soluble and can be cleaned with water. Our adhesive can be thinned with a small amount of water if it helps with spraying, or airbrushing.

It can be combined with our powders to make assorted piled and shovelled snow effects.

Though it is water based, when dry the snow effects can be sprayed by saturation with clear acrylic matte spray lacquer to make them waterproof and permanent.



Precision Ice and Snow adhesive works well. However it does not produce a strong bond. It is designed for static models which will not be handled. It is designed to allow for the build up of the snow effects which can be made permanent with lacquers if the finished work is going to be handled.

Allow the snow to dry between coats on thin delicate branches and wires

On this 1/35th barbed wire, we first used crystal clear photo mount type adhesive to fix two coats of Krycell fine onto it. This coating of snow was permanent and very solid. Once we had completed this we used our adhesive to build up more thickness quickly.

The first coatings of photo mount type adhesive made a secure grip for the later layers of snow.



Aerosol sprays and adhesives not intended for modelling use

Krycell Snow powders are versatile. They can be glued using any clear lacquer which acts like an adhesive.

This can be useful if you want to apply the snow powder onto a model- diorama, or gaming board and you want it to be permanent and even washable.

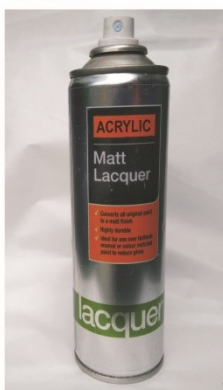
Make sure that your adhesive is crystal clear before use.

Some aerosol adhesives are advertised as clear. However, it is advisable to test this by spraying a concentrated amount onto a clear sheet. Also, this is a good time to test the spray pattern and appearance too.

Permanent photo mount type adhesives are useful for ultra fine and gradual coatings, for instance like light snow and frost over trees or vehicles.

Clear acrylic lacquers can also be used as an adhesive. Matte, or gloss work just fine. Don't worry, you will not see a gloss finish after applying the snow powder.

These are just some of the types of permanent adhesives you can use for permanent situations like gaming boards



USING OTHER ADHESIVES

Aerosol hair sprays are very good for building up heavy layers of snowfall quickly which can be imprinted with footprints and tracks. Turn the diorama upside down and tap to remove excess powder at every coat. Soon you will have a thick soft coating of snow ready for footprints and tracks. Making thick printed snow scenes is easy and accurate.



Once again, just like our adhesive, hair sprays and lacquers used to glue Krycell powders can be made permanent for handling and gaming. Simply wait until the snow has completely dried first. Then spray with a suitable crystal clear matte acrylic lacquer. Using a matte lacquer makes sure that your scenery and stuff is not shiny and glossy.



On **1**, we have applied snow powder over our adhesive to produce a heavy frost effect. On **2**, we have sprayed this with a clear lacquer. The snow effect becomes slightly patchy, but the look is even more chilly and Arctic. Also, the finish becomes more durable and waterproof.



Figures with Krycell snow and wash that have been sealed with acrylic lacquer



All liquid clear lacquers and our adhesive can be mixed with the snow powders to make shovelled and piled snow. Shown here is fresh blizzard over disturbed snow and rough piled snow



PVA mixed with our snow powder is too thick and will hide the crystal appearance of our snow powders. Thinning with water may help. Our suggestion is that you experiment with this adhesive. A waterproof **PVA** may be very useful for larger areas such as gaming boards. Experiment first. Experiment With ways of sealing and Making you work permanent

The types of adhesive and the way they are used is limited only by what you want to achieve and your imagination

If you want permanent displays that can be handled and used for gaming and stuff, then use techniques and glues that will give you the result you need

