

Product guide

Step by Step



How to use Weathering Effects

Art. 73.801

European Splash Mud

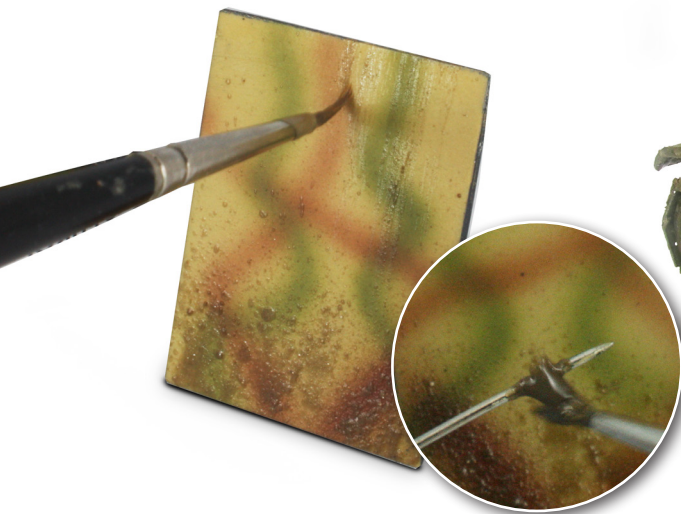
A dark brown color most commonly observed in central European terrain and humid areas of the Mediterranean countries. Most of the non alkaline grounds present this color. With this product you can depict subtle splash effects, as well as accumulated layers covering the model surface.

By Chema Cabrero



1 Splash Mud can be projected by applying it on a brush, rubbing the brush with a needle or stick- an easy way to keep the amount of splash and its direction under control. If you want to cover a larger surface, you can use a stiff hard fiber brush, and project the product unto the surface by just rubbing the fibers of the brush with your fingertip.

2 For larger splatter effects, you can blow air over a brush loaded with the product, another trick for achieving realistic splashes, which creates a very convincing random scattering.



3 We can also apply the mud with a brush, as streaking traces on vertical panels, and then blend and diffuse these traces with a wet brush for the desired run-off effect.



4 Working with layers of product, you can achieve very realistic results, and Splash Mud can also be combined it with layers of other Vallejo Weathering Effects or with a previous coat of Vallejo Pigments.