

# Product guide

## Step by Step



### How to use Weathering Effects

Art. 73.806

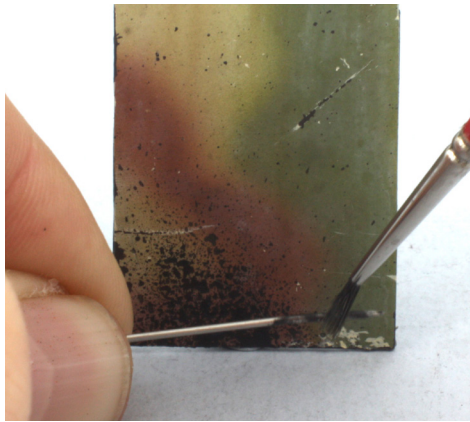
## Black Splash Mud

This sort of mud is probably the most frequently depicted in the military models and dioramas of the last decades. This is not so strange because the wet mud in places of Central Europe show this particular dark shade. Let's see how it works over a tri-tonal camo.

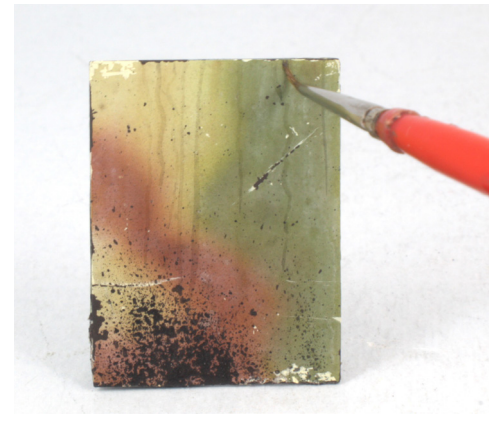
By Michel Pérez



**1** Like the rest of references of the Splash Mud range, this is a water based product, no smell, no odor, and you can clean the used tools easily. This is the natural look just out of the bottle.



**2** Rubbing the brush with a needle (as portrayed) or other similar tool, you can obtain a convincing, very realistic splash look finish.



**3** Playing with all the possibilities of the product, as well as thinning it down, you can depict various other effects, like streaking grime or dirty water.



**4** The final aspect shows this splash effect combined with the streaking grime, very real, with the subtle shine and texture that suggests humidity and moisture.

