

3 DIFFERENT FORMULAS

1 Our basic line is especially designed for both airbrush and brush painting. These paints don't clog in the tip of the airbrush and are easily cleaned or thinned with water (although we highly recommend our own Acrylic thinner). We care about your health and insist that our paints are non-toxic and don't produce harmful odors. They offer a light, smooth, satin finish which is the ideal surface for further weathering. We have a wide range of specific colours designed for the popular "modulation technique", and also the correct colours (RAL, FS, RLM) which are scaled for the best results. Other colours complete our ever expanding catalogue, including the most popular current colours, for example colours ideally suited for chipping and producing rust effects. We also of course produce a range of standard colours.



2 We also produce a different formula for our figure series colours which are specially designed for painting with a brush to produce a matte finish suitable for this genre. This range is designed in co-operation with the best figure painters in Europe.



3 Finally, our last formula, is for our Air series. These paints have the perfect opacity and a perfect satin finish. After research, the colours are altered for a scale reduction effect. The colours for many countries in a variety of areas are researched by the most prestigious historians such as Mr. Michael Ullmann and Mr. Nicholas Millman or Mr. Maciej Goralczyk.



OUR JARS

The bottles are our standard 17ml plastic bottles with a drip nozzle for easy dispensing in to an airbrush cup. These bottles are easy to store, ergonomic, and user-friendly.



BRUSH AND AIRBRUSH

In both cases, the opacity of the paint is excellent with a great ability to cover any surface. Something that no other brand has legitimately achieved.



DILUTION AND APPLYING

You can dilute our colours with tap water, although we recommend using our specific thinner for best results. Don't forget that you can use our colours (label with brush & airbrush) directly from the bottle without dilution. The AK-712 thinner improves the performance of the paint and is vastly superior when compared with most available thinners.



AKRYLIC SETS EFFECTS SETS

Each colour serves to produce a different goal or effect, e.g. for rust, rubber, wood, brass even our popular colour for chipping. On the boxes you can see examples of how they can be used and also to serve as an inspiration for your models.



afv series

Our modulation sets are specially designed for painting vehicles. The AFV series also has in its line the real colours. You can obtain these colours separately or in sets or blisters. The different colours included in these sets are RAL colours, Federal Standard, etc. which are used by the different armed forces of the world in all areas and also for civilian use.



AIR SERIES

Specially designed for painting airplanes and containing a wide range of authentic colours. The different colours included in these sets are RLM colours, Federal Standard, etc. used by the different armed forces of the world in all areas. In sets, in small blisters, or separately.



FIGURE SERIES

Specially designed for painting figures and containing a wide range of real colours, with a new formula with the finest pigments for brush. The boxes contain on the back a step by step sequence of how to use these paints. You can get these colours in sets, in small blisters, or separately.



WARGAME SERIES

Specially designed for painting Wargame models and containing a wide range of real colours, with our standard formula with the finest pigments for brush and airbrush. In sets, in small blisters, or separately.



NAVAL SERIES

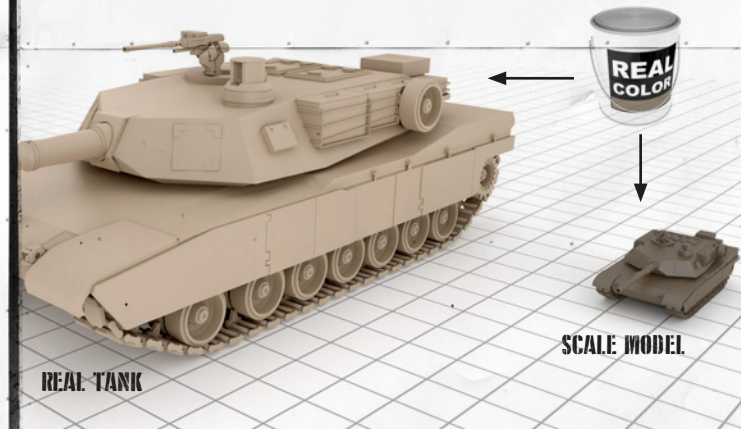
Designed for painting ships and containing a wide range of real colours with our standard formula with the finest pigments for brush and airbrush. In small blisters, or separately.



SCALE REDUCTION FACTOR

Therefore, painting a full size tank and a model with the same colour, gives an unpleasant effect, because the small tank seems much darker, having less surface to reflect light so that our eyes perceive the same colour in a scaled tank as in a real one, we should use brighter colours.

A Example using Real Colour for both the Real Tank and the Scale Model.



B Example using Real Colour for the Real Tank, and AK interactive's Colours for the Scale Model.

“ This process is not as simple as adding white to a dark colour, but do not worry, because we have done it for you. ”

